



■ SchemaLogic Connector for EMC Documentum

Overview

The SchemaLogic Connector for EMC Documentum allows users to link Content Classes and Elements defined in SchemaServer, to Documentum Object Types and Attributes. The Documentum Object Type hierarchies, links, attributes and relationships are maintained in SchemaServer and synchronized with the target Documentum systems.

These same Content Classes and Elements can then be linked to SharePoint 2007 Content Types and Site Columns through the SchemaLogic Connector forSharePoint 2007, ensuring metadata alignment across systems.

Feature Overview

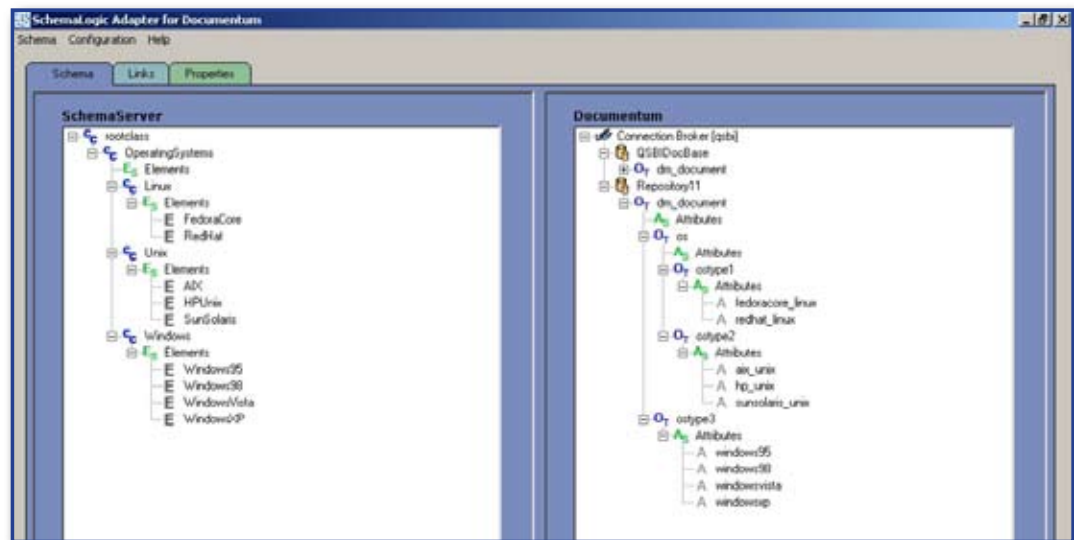
User Authorization

The Connector ensures that users have authorization to query object types and perform data dictionary updates for each repository. If the user does not exist in a repository or does not have appropriate permission, the repository will not be included in the displayed repository list.

Connecting to EMC Documentum

After successful user login, the Connector queries the Documentum repositories through the Connection Broker and the SchemaServer and Documentum system trees can be viewed in the client adapter. The SchemaServer tree shows the Content Class and associated Elements and the Documentum Repository tree shows the object types and associated attributes for each repository for the requested Connection Broker.

The Connector can also exclude repositories from appearing in the tree by specifying them in the connection broker configuration file.

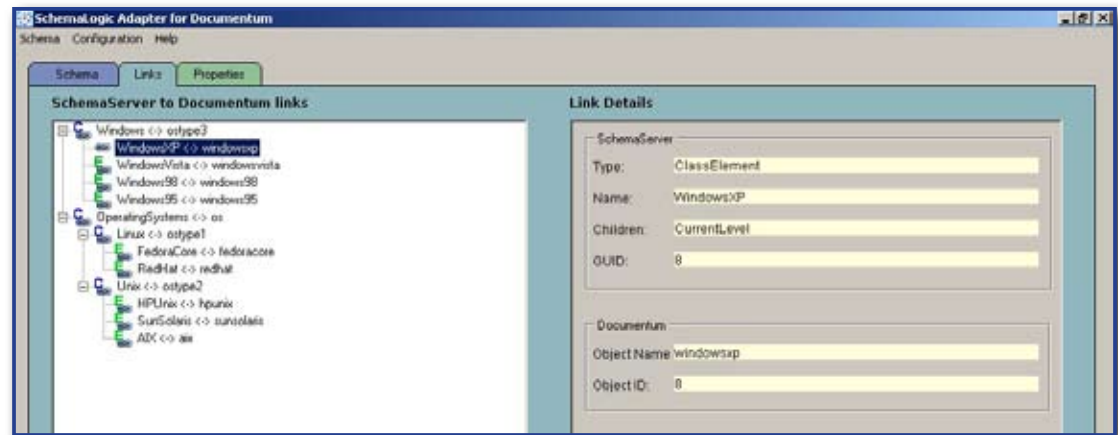


SchemaServer and Documentum Tree View



Object Type and Attribute Management

The Connector client presents a graphical view of the Documentum object types and attributes. Users can then link Documentum object types and attributes to SchemaServer Content Class and Element objects, respectively.



View of Established Links

Synchronize Documentum Data with SchemaServer

The Connector updates the Documentum data dictionary when the Synchronize operation is performed. SchemaServer will supply values to update the data dictionary for the object type label, and for an attribute label default value, and fixed value assistance values.

Other Features

Logging

The Connector logs information to a configuration file that contains time/IP stamps on the following actions:

- ❖ Attempted user login
- ❖ User login successful
- ❖ Object types defined/updated/mapped
- ❖ Synchronization success/failure

Exclusion

The Connector supports the ability to exclude whole repositories from syncing, even if the user otherwise has permission to access them. This exclusion method will use the "deny_hosts" connection broker mechanism.

Installation

The Connector is installed using Windows installers for the Web Service and Client

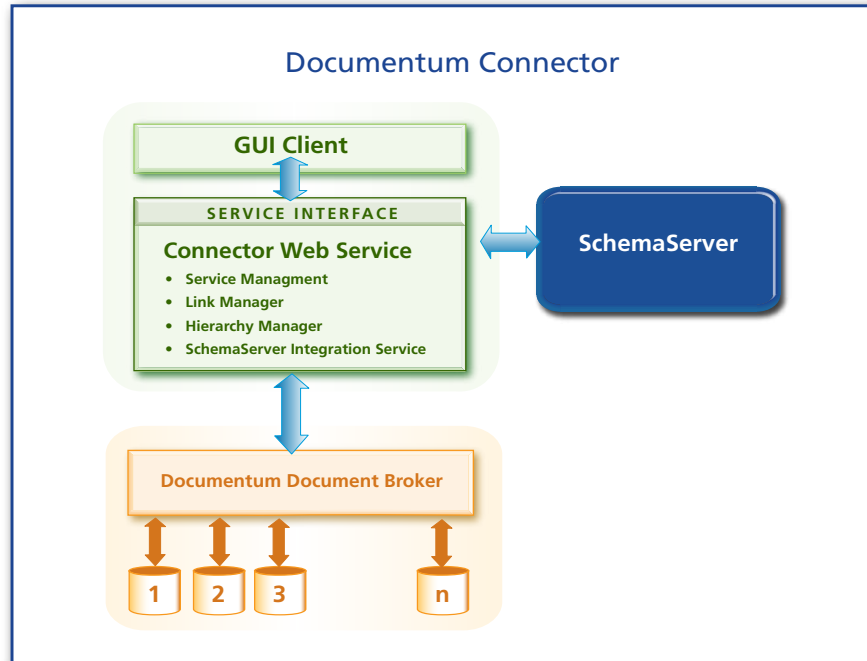
Documentation

- ❖ User Guide
- ❖ Installation and Administration Guide
- ❖ Software Development Kit

Functional Components

There are three main components of the Connector

- ✦ **Web Service** - comprised of a Java web service running in Tomcat. It connects to the Connector Client, the SchemaServer WSDL API, and the Documentum DFC.
- ✦ **Connector Cache** - maintains a physical cache to store data necessary for the Connector and to improve performance. The server cache is in an MS SQL Server database.
- ✦ **Client** - a Windows GUI client. It connects to the Connector Web Service component.



Specifications and Installation Requirements

SchemaLogic Software	
SchemaServer	v4.4
Workshop	v4.4
Documentum Connector Web Service	v1.0
Documentum Connector Windows Client	v1.0

Third Party Software	
Documentum	v5.3 (v6.0 support Summer 08)
OS	Windows 2003 Server
Web Application Server	Tomcat 5.5
Data Base	MS SQL Server 2005
DB OS	Windows 2003 Server
Java	v1.5

About SchemaLogic, Inc.

Our software provides global companies a powerful and cost-effective approach to dealing with the overwhelming amount of information critical to doing business today. People from diverse groups must be able to access and share information across complex systems throughout their enterprise. In order to do this, descriptions, tags and categorizations of information must be accurate and consistent.

SchemaLogic is the leading provider of metadata management solutions for unstructured content. Metadata management enables findability by organizing the terms, definitions and relationships that describe content. Our solutions extend the value of content management by ensuring that all content is readily found; is consumed in a relevant context; and is protected according to policy. The Company has licensed software to some of the best-known and largest companies in the world, including Associated Press, Chevron, Corbis and Reed Business Information. To learn more about SchemaLogic, please visit www.schemalogic.com.

World Headquarters:
620 Kirkland Way, Suite 100
Kirkland, WA 98033

Tel: 425 885 9695
Fax: 425 883 0117
Email: info@schemalogic.com


SchemaLogic
www.schemalogic.com